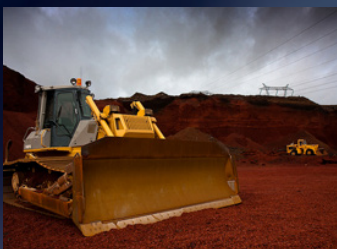




# PROFILES & MATERIALS

**HYDRAULIC & PNEUMATIC SEALS**  
PRECISION ENGINEERING



O-RINGS & BACKUPS	O-RINGS*	TEFCAP*	BST8	BST9	STATIC SEALS	BONDED WASHERS*	SPE0	SPEI	SPFSI	SPFS0	WIPER SEALS	WA1	WA1F	WA1P	WA1T	GUIDE RINGS	GF1	GF3	GF4	GF6	GF7	
BST10	BST11	BST12	BST13	BST14	SP1	SP2	SP3	SP4	SP5	SP20	WA2	WA2CP	WA2F	WA2P	WA2S	GF8	GF9	GF10	GF11	GF12		
BST15	BST16	O-RING KITS*	O-RING CORD*	SINGLE ACTING SEALS	GS1	GS1P	GS2	GS2SB	GS3		WA3	WA3P	WA7	WA7D	WA8	WEAR STRIPS	GFTM*	GFTI*				
DOUBLE ACTING SEALS	PK8	PK8C	PK8BU	PK8OJ	GS4	GS4SB	GS6	GS6P	GS7	GS7B	WA8PB	WA9	WA10	WA11	WA12	DU & DX BUSHES	DUBI*	DUBM*	DXBI*	DXBM*		
PKDA	PKDAS	PK56	PK56BU	PK56SB	GS8	GS8B	GS9	GS9DS	GS9S	GS9SC	WA13	WA13Y	WA13Z	WA14	WA15	HPR ROTARY SEALS	HR0P	HR0R	HRS	HR18	HR0	
PK58	PRCR	PRCRBU	PRCRBULL	PRCRS	GS9SSE	GS16	GS16P	GS17	GS18	GS19	WA16	WA75	WAC	WACA	WAXD	HR1	HR1RM	HR3	HR3E	HR3PM	HR3R	
PRKCR	PKOK	PRKOJ	PRKJS	PRKJS	GS19H	GS21	GS22	GS23	GS28	GS33	WAXS	MCA / PIN*	WAMCB*	WADKB*	WHAT	HR4	HR4E	HR5	HR5E	HR9	HR10	
PROCR	PROJA	PROJBU	PROJBULL	PRMGS	GS37	GS38	GS39	GS63	GSHAT	PK1	PNEUMATIC SEALS	DAP*	DAPS*	PA1	PAA4	HR14	HR15	HR16	HR16M	HR16Q	HR17	
PKAQ	PKAQ10	PKAQ20	PKSP	PK8LY	PK1P	PK2	PK2SB	PK3	PK4	PK4SB	PAA5	PAA6	PAD1*	PAD2*	PAD3*	OIL SEALS & BEARING PROTECTION	BPHP*	OSTC*	BP1	BP2	BP3	
PK80BU	PK8SC	PK8SE	PK8SSE	PK9	PK6	PK6CP	PK6M	PK6PA	PK7	PK7B	PADK*	PAE9*	PAEK*	PAK1	PAK2	BP3A	BP3F	BP3LN	BP3M	BP4	BP5	
PK9C	PK9S	PK17	PK17P	PK17PB	PK8S	PK16	PK16C	PK16B	PK18	PK19	PAK3	PAK5	PAK7	PAK8	PAK9	BP5LN	BP6	BP6A	BP6E	BP6L	BP7	
PK19H	PK20	PK23	PK23C	PK23CB	PK21	PK22	PK37	PKCUP	PKCUPC	CUP-F	PAK10	PAK11	PAK34	PAK35	PAK36	BP7S	BP8	BP9	BP10	BP11	BP12	
GS80J	GS80JBU	GS9C	GS9D	GS20	CUP-N	QA-C	QA-E	QA-P	QA-U	SP5	PAS1	PAS2	PAS3	PAS4	PAS5	BP14	BP15	BP16	BP16F	BP17	BP17A	
GS32	GSSP				SP6	SP7	SP11	SP12	SP13	SP14	PAS6	PAS7	PAS8*	PAS9	PAS11	BPAD1	BPAD2	BP18	BP19	BP93	BP94	
BUFFER SEALS	HR14	GS9D	GS9S	GS63	VEE PACKER SEALS	VP10-12	VP10-12A	VP10-12C	VP10-12R	VP10-12T	PAS34	PAS35	PAS36	PAV1	PAV2*	BP95	BP96R	BP97L	BP98	BP99	BP99B	
PAVBUFF1	HRS	PAS9			PK22TW	VP24	VP13-15	VP25-27	VP29-31		V-RINGS & END CAPS	VA	VAX	VE	VL	PADO*	PADF*					
<b>SEAL KITS</b>		BREAKER CASE CATERPILLAR CLARK CORMACH DAEWOO	DATSUN FURUKAWA HALLA HEILA HIAB HITACHI	HMF HY-MAC HYUNDAI IHI INTERNATIONAL JOHN DEERE	JSW KATO KAWASAKI KOBELCO KOMATSU KUBOTA	mitsubishi NORGREN PALFINGER PARKER SAMSUNG SNORKEL	SUMITOMO TAKEUCHI TCM TOYOTA VOLVO WARD YANMAR					VRM	VS	END CAPS*								

\* standard range only



## ALL WE NEED TO KNOW FROM YOU IS

the profile or type of seal  
the dimensions  
the material(s)

the pressure  
the slide speed  
the operating temperature

## WE SUPPLY YOU WITH

Seals up to 2000mm in diameter  
Any custom-made seal  
Urethane, rubber, teflon and more  
One hour service, if required

One-off and large quantities  
Over 200 standardised profiles  
Metric or imperial dimensions  
Highest quality and fastest delivery

## OUR STANDARD MATERIALS COVER

### POLYURETHANE

#### Super Red (ORSP)

Hardness: 95  $\pm$ 2 Shore A  
Pressure: up to 500 bar  
Temperature: -50 to +120°C

#### Ultra Performance (ULTRA 95)

Hardness: 95  $\pm$ 2 Shore A  
Pressure: up to 500 bar  
Temperature: -50 to +120°C

#### Grin Food

Hardness: 95  $\pm$ 2 Shore A  
Pressure: up to 500 bar  
Temperature: -50 to +120°C

#### Wifflon

Hardness: 60  $\pm$ 2 Shore D  
Pressure: up to 400 bar  
Temperature: -50 to +120°C

#### Motuf

Hardness: 75  $\pm$ 2 Shore D  
Pressure: up to 400 bar  
Temperature: -50 to +120°C

#### Monyt

Hardness: 82  $\pm$ 2 Shore D  
Pressure: up to 1000 bar  
Temperature: -50 to +120°C

### RUBBER

#### NBR

Hardness: 85  $\pm$ 5 Shore A  
Pressure: up to 160 bar  
Temperature: -30 to +100°C

#### HNBR

Hardness: 85  $\pm$ 5 Shore A  
Pressure: up to 160 bar  
Temperature: -35 to +150°C (170°C short loads)

#### Neoprene

Hardness: 85  $\pm$ 5 Shore A  
Temperature: -30 to +100°C

#### Viton

Hardness: 85  $\pm$ 5 Shore A  
Pressure: up to 160 bar  
Temperature: -20 to +200°C

#### EPDM / EPDM Peroxide

Hardness: 97  $\pm$ 5 Shore A  
Pressure: up to 160 bar  
Temperature: -40 to +120°C

#### Aflax Extreme

Hardness: 85  $\pm$ 5 Shore A  
Temperature: -10 to +200°C

#### Silicone

Hardness: 85  $\pm$ 5 Shore A  
Temperature: -60 to +200°C

### TEFLON

#### PTFE

Bearing Pressure: 2N/mm  
Temperature: -200 to +260°C

#### TMCF (Multifibre)

Bearing Pressure: 3N/mm  
Temperature: -200 to +260°C

#### 25% Glass Filled PTFE

Bearing Pressure: 3N/mm  
Temperature: -200 to +260°C

#### TFV (Virgin)

Bearing Pressure: 3N/mm  
Temperature: -200 to +260°C



### QUEENSLAND

8 Aranda Street,  
Slacks Creek, QLD 4127

P: (07) 3290 1846  
F: (07) 3208 6235  
E: sales@ozseals.com  
E: sales@sealnet.com.au

### VICTORIA

Unit 9, 67-75 Garden Drive,  
Tullamarine, VIC 3043

P: (03) 9335 5699  
F: (03) 9335 5799  
E: sales@ozseals.com  
E: sales@sealnet.com.au

### NEW SOUTH WALES

P: (02) 9620 8382  
F: (02) 9620 8381

**1300 792 600**